

TOP OF RIDGE  
ELEV. = 130.00'

TOP OF WALL  
ELEV. = 119.02'

TOP OF WALL  
ELEV. = 109.08'

TOP OF RIDGE  
ELEV. = 130.00'

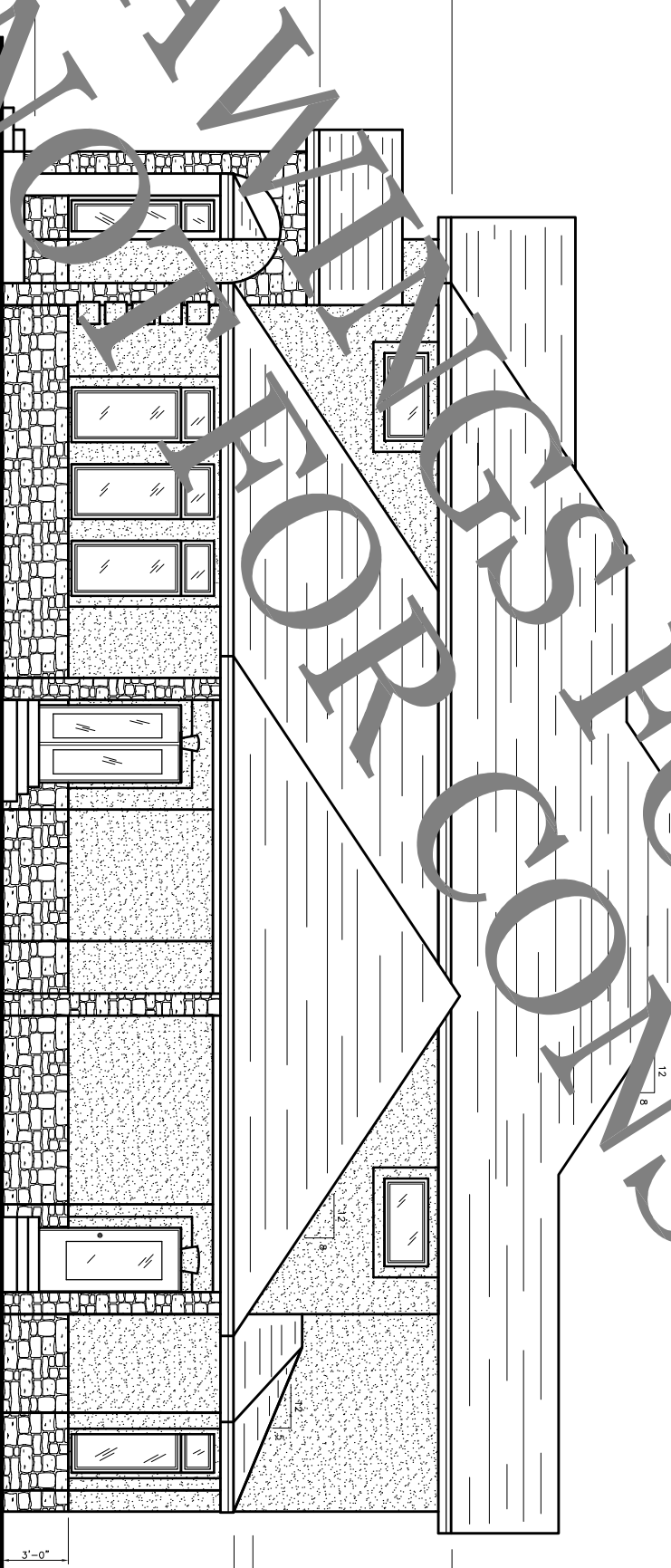
TOP OF WALL  
ELEV. = 119.02'

TOP OF WALL  
ELEV. = 113.02'

TOP OF FLOOR  
ELEV. = 100.00'



REAR ELEVATION



RIGHT SIDE ELEVATION

TOP OF WALL  
ELEV. = 119.02'

TOP OF WALL  
ELEV. = 107.75'

TOP OF RIDGE  
ELEV. = 130.00'

TOP OF WALL  
ELEV. = 119.02'

TOP OF FLOOR  
ELEV. = 109.58'

TOP OF WALL  
ELEV. = 109.08'

TOP OF FLOOR  
ELEV. = 100.00'

REVISION	DATE